



## Jumelles Tour

### The Geneva Lake from another view



Discover the Suisse romande area from above and enjoy an unforgettable flight aboard one of our helicopters with family, friends or during a company outing.

**Your route :**

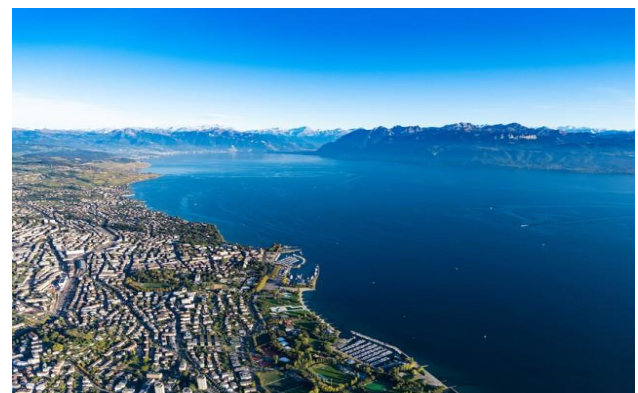
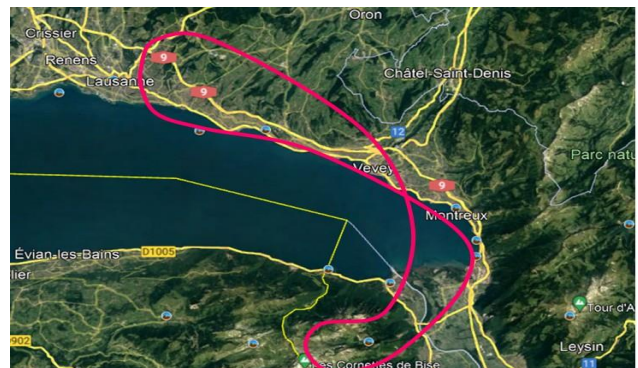
Fly over the Lemman Lake and Lavaux, the Riviera vaudoise, Montreux and the Chillon Castle, the Grammont mountains, the Taney Lake, the Cornettes de Bise et the Jumelles.

We offer you a stopover, either for an onsite apéro or for a friendly lunch at the alpine buvette Chalavornaire, with an outstanding view of the Geneva Lake and the Lavaux, from another point of view.

- Apéro : At the Chalavornaire pass
- Lunch : At the Chalavornaire buvette (summer)

Flight duration : approx. 25 minutes + stopover  
 Price per person : CHF 190.-, price valid from 4 persons

Acc. to option chosen :- Apéro, dried meat and cheese board included  
 - Lunch at the buvette : lunch not included



Heli-Lausanne

+41 21 636 35 35

[www.heli-lausanne.ch](http://www.heli-lausanne.ch)

**Get in touch now for pricing & information**

[info@heli-lausanne.ch](mailto:info@heli-lausanne.ch)

